

A nighttime cityscape featuring the Oriental Pearl Tower and other skyscrapers. The foreground is dominated by long-exposure light trails from traffic, creating vibrant streaks of red, orange, and yellow. A dark blue semi-transparent rectangle is overlaid on the right side of the image, containing white text.

one world
one connection

www.mainone.net


MainOne



Broadband Access for All: Issues and Strategies

National Conference, Nigerian Computer Society, Enugu, Nigeria

**MainOne**

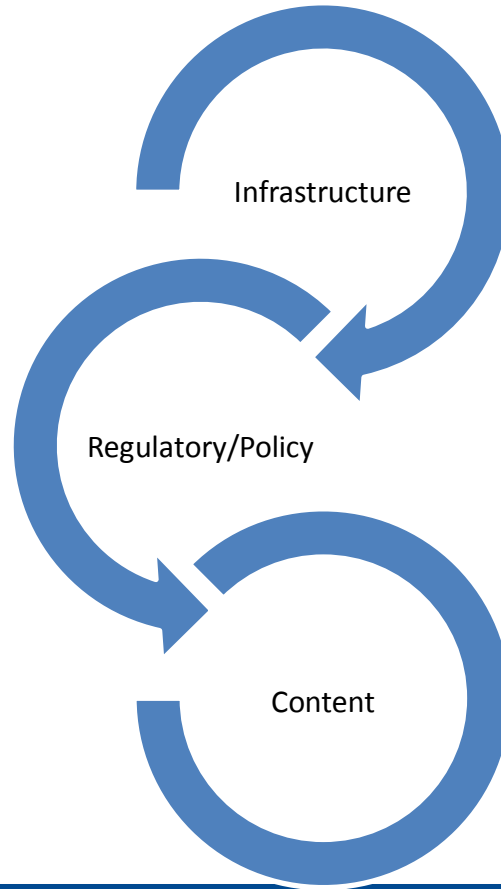
Synopsis

Every 10% increase in broadband penetration in developing countries results in a commensurate increase of 1.3% in GDP (Zhen-Wei Qiang, World Bank economist)



How do we drive this?

Addressing the Access conundrum



Infrastructure

- What is required?
 - Access for All
 - New backbone
 - Funding
 - PPP Collaboration
 - Extending coverage areas
- What is MainOne doing?
 - Subsea: Int'l wholesale price crashed by 80%
 - Terrestrial: 300+ km in Lagos
 - Subsea Extension to PH

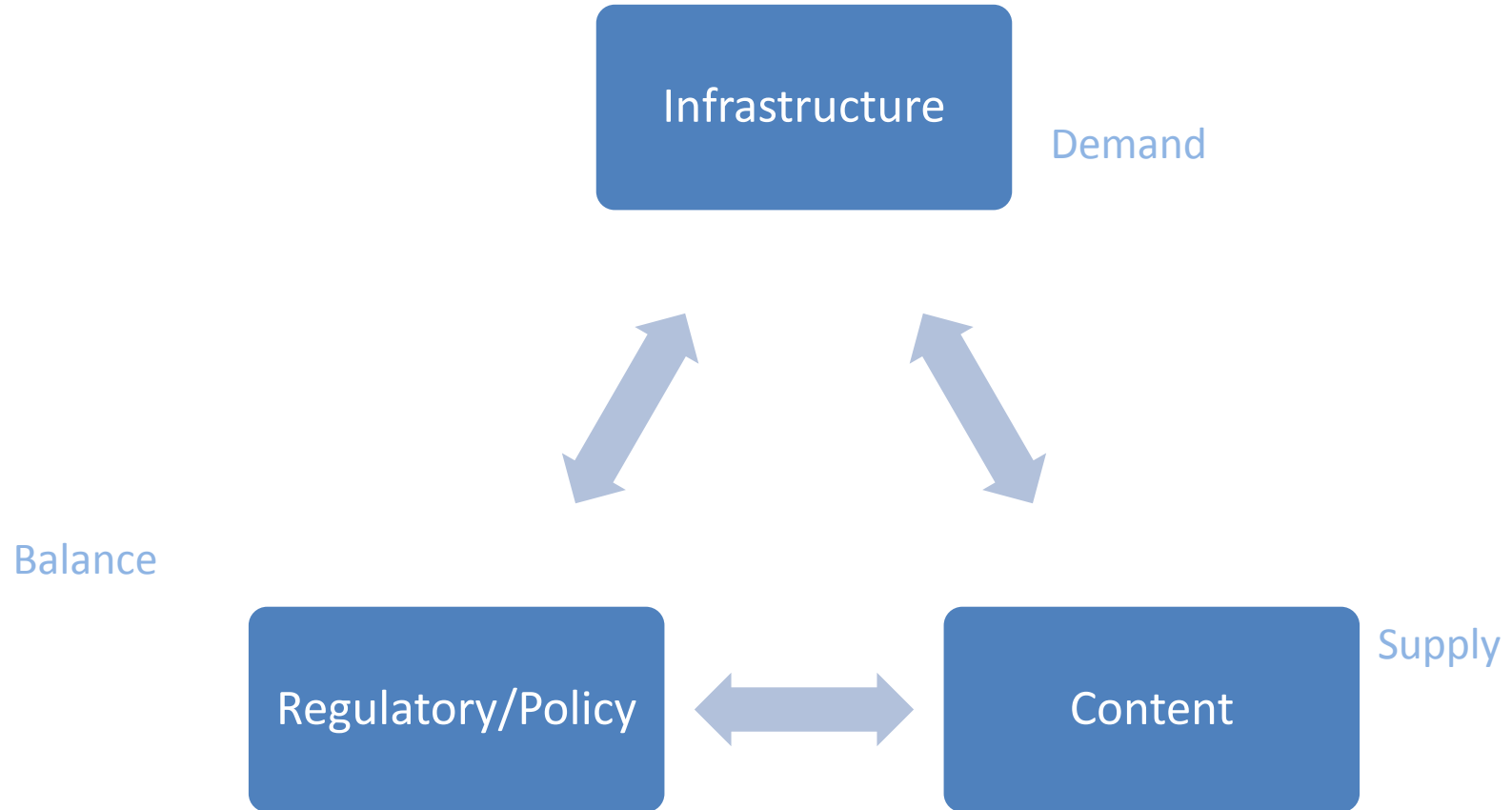
Regulatory/Policy

- Open Access Initiative
 - Infracore
- Harmonised Taxes and RoW
- Government online
- Regulatory Policing
 - Financial Industry
 - Disaster Recovery etc

Content

- What is required?
 - Regulatory intervention
 - Businesses to focus on local content development
 - Financial motivation
 - Encourage indigenous hosting of content
- What is MainOne doing?
 - Education: MainOne REN
 - Innovation initiatives and partnerships
 - ISPON Software
 - Lagos Angel Network
 - CCHub
 - Imagine Cup
 - Infrastructure
 - MainOne Tier III Data Center

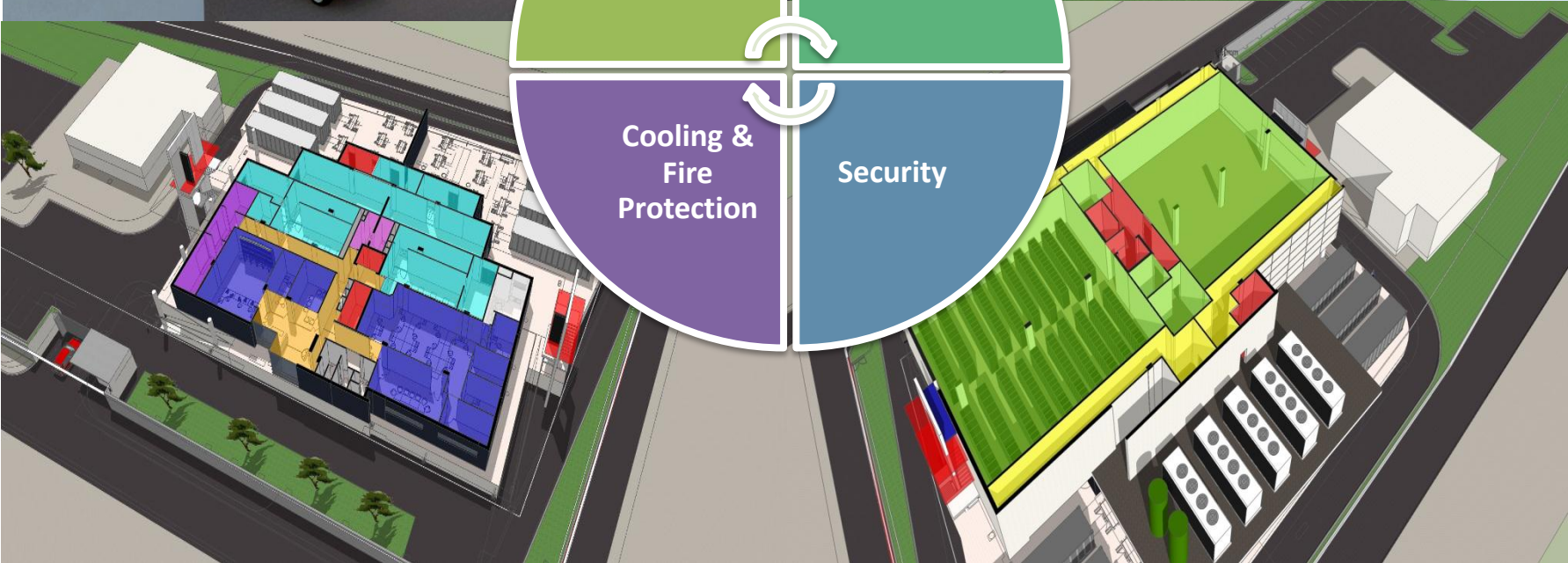
Content



Why host in MainOne's Data Center?

- Financial
 - Reduce capital outlay
 - Focus on corporate goals
 - Enhanced performance
- Industry motives
 - Competitive, due to reduced barriers of entry
 - Connection to global players
- National concerns
 - Security
 - Employment and revenue generation
 - Privacy

MainOne Data Center



The MainOne Data Center Advantage

Tier 3+ Data Center

- Designed to Tier 3+ in Mechanical and Electrical (Uptime Institute Standards)
- TIA 942 Compliant
- World Class Standard

Operational Excellence

- Round the Clock , End to End Network Performance and Monitoring of all services
- Services are backed by world class SLAs and guaranteed service credits in the event of a failure.
- Highly trained and skilled technical staff

4 years Track Record

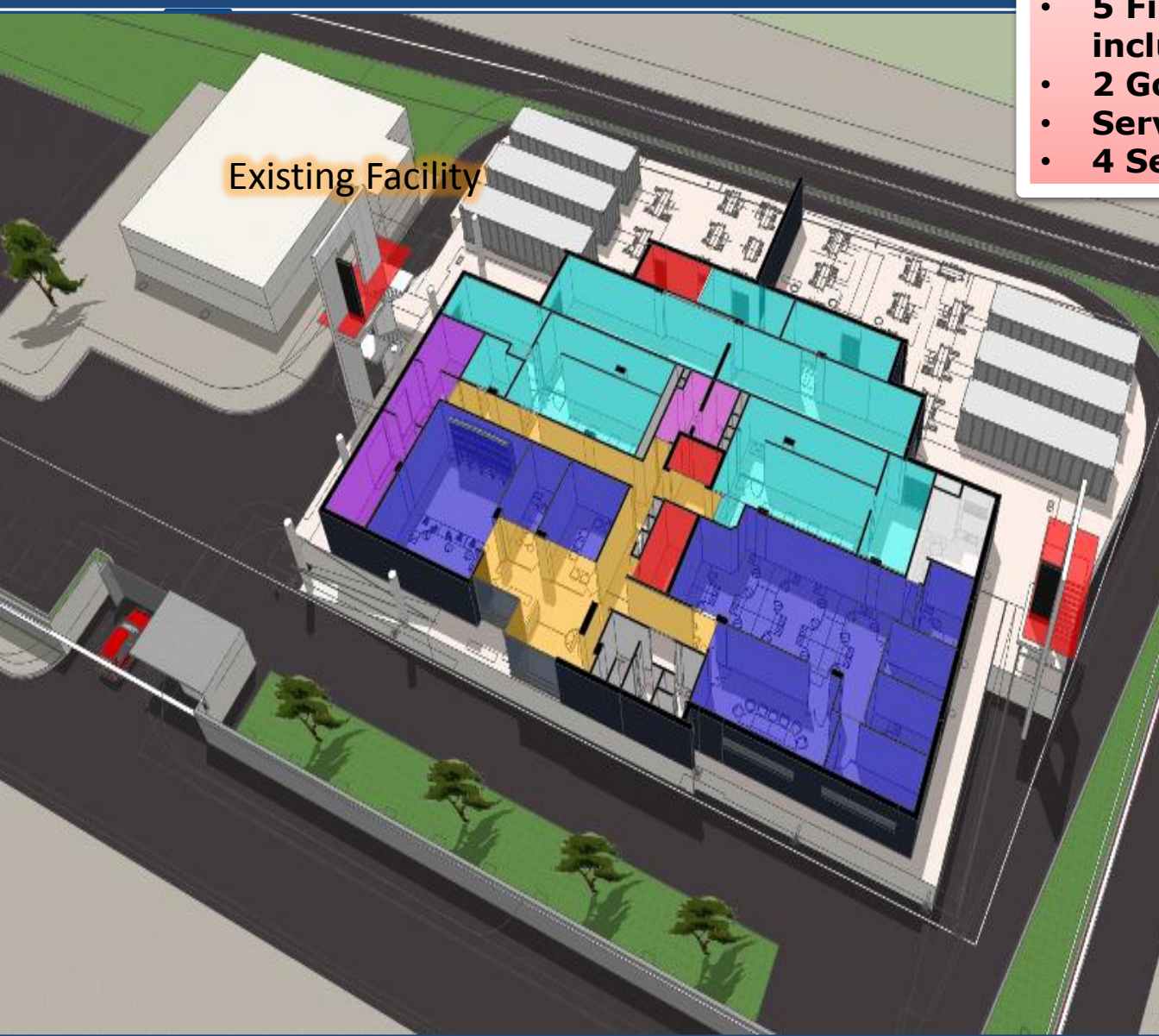
- Current Facility has experienced zero downtime since launch
- Blue Chip Companies co-located at our facility

Connectivity

- Direct Access to our 1.92 Tbps subsea cable
- Redundant and Diverse Metro Access from Customer Locations to Racks

- 600 Racks; Total space 3500 sqm
- Largest Commercial data center in West Africa
- \$40m investment
- Designed to Tier III standards (Uptime Institute)





Existing Facility

Existing Facility hosts (77 Rack capacity):

- 5 Financial Institutions including NIBBS
- 2 Govt. Agencies
- Service Providers
- 4 Service Providers

Features

- **Multiple redundant power supply:**
- 6x 1.5MVA generators in an N+N configuration.
- 105,000 liters diesel storage tanks capacity
- **Security:**
- Armed Police and Security personnel
- Biometric Access to all locations
- CCTV cameras + Perimeter fencing
- **Fire Detection, Suppression & Cooling:**
- Water chiller Systems
- VESDA Fire Systems
- FM-200 Fire Suppression
- **BMS System** for Real time monitoring
- **Connectivity Access** to metro network of major connectivity providers









MainOne DC Construction

2014-02-21 MAT 09:36:13





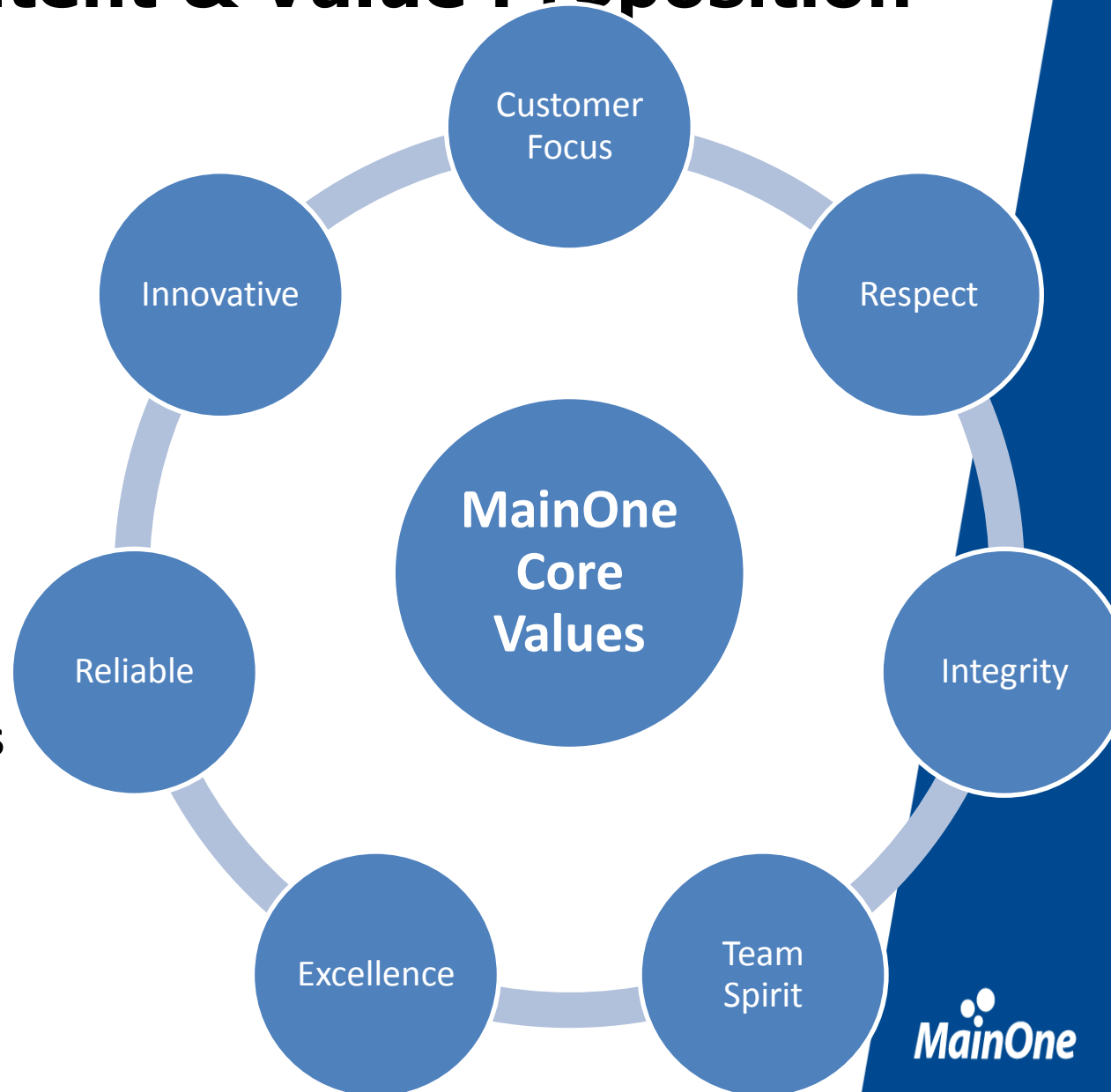
Strategic Intent & Value Proposition

Vision

West Africa's
Communications
Solution provider of
Choice

Mission

To deliver world-class
Communications
Services



The MainOne SubSea Cable Network



Submarine Cable built by TE Subcom

- Over 5 Decades of Submarine Cable builds
- Over 80+ submarine cables
- Leader in Submarine OADM & 10Gbps based systems

1.92 Tbps, 7,000KM

Highest lit capacity (80Gbps) in West Africa

100% Uptime Availability since launch in 2010

\$ 240m investment

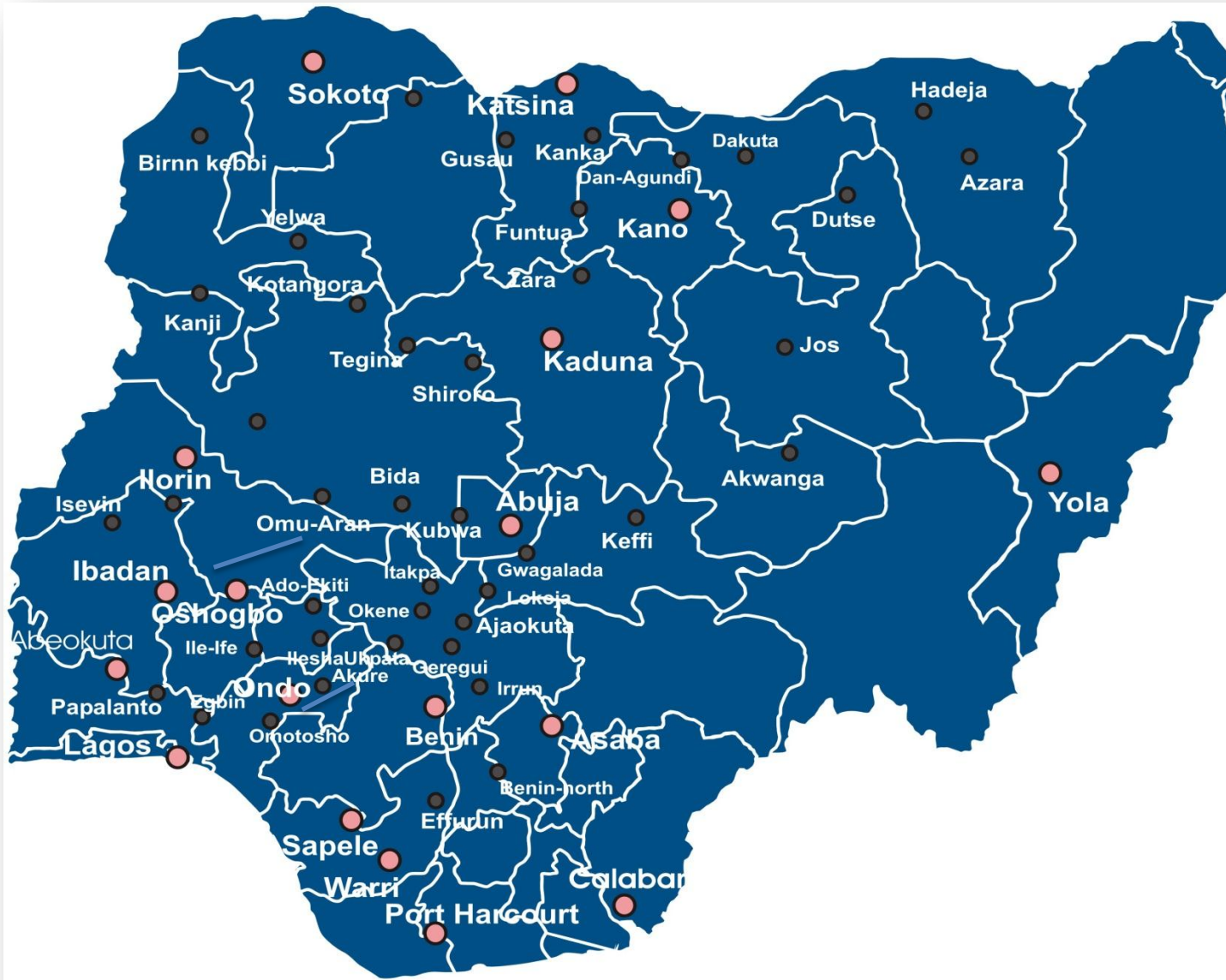
MainOne's Global Reach



Interconnection Partners



Points of Presence in Nigeria



LAGOS

- Lekki
- Victoria Island
- Surulere
- Ikeja

ABUJA

- Wuse II

PORT- HARCOURT

- Trans-Amadi

OYO

- Ibadan

OGUN

- Agbara

Parting shot

Data (information) is the currency of the knowledge-based economy



Protect it!

thank you


MainOne

www.mainone.net

